

MS151/MS152 SERIES

Economical Stylish Gas Spring Monitor Arm

Easily Position Your Monitors
and Boost Productivity

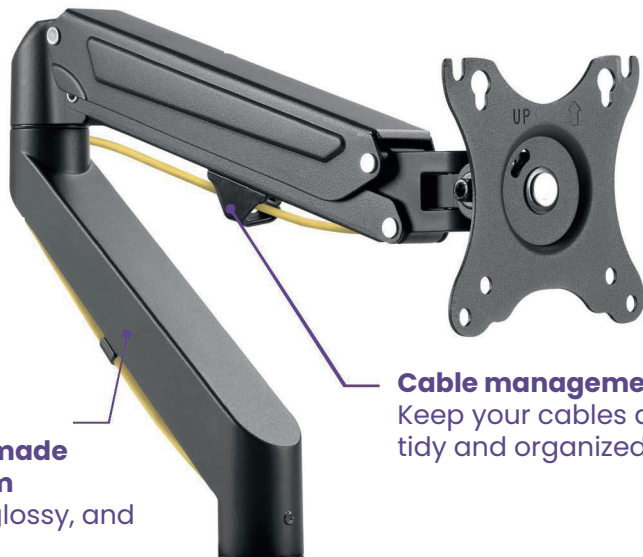


Gas spring monitor stand

MS151 / MS152



Spring mechanism
Provides effortless height adjustment.



Lower arm made of aluminum
for a sleek, glossy, and stylish look.

Cable management
Keep your cables and desk tidy and organized.



VESA mounting
for easy attachment and detachment.



Integrated spring tension
adjusts the arm perfectly to the monitor.



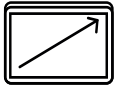
Smooth arm insertion
Allows for easy installation.



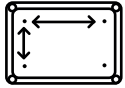


Gas spring single monitor stand

MS151



Monitor size :
431 x 812mm
17"~27"



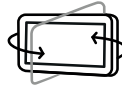
VESA
Compatible



Weight capacity :
2~7kg
4.4lbs~14.4lbs



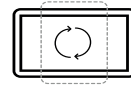
Tilt adjustment :
+90°~ -45°



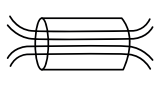
Swivel adjustment :
+90°~ -90°



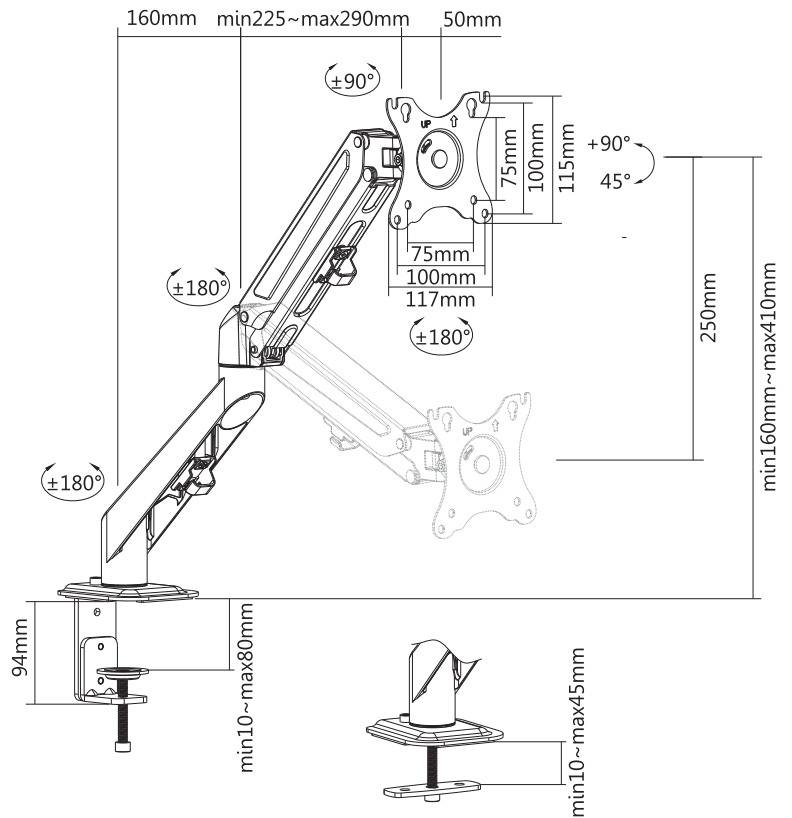
Curved monitor



Rotation adjustment :
+180°~ -180°

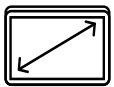


Cable management

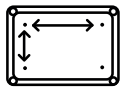


Dual Monitor Gas Spring Mount

MS152



Monitor size :
431 x 812mm
17"~27"



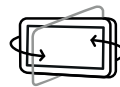
VESA
Compatible



Weight capacity :
2~7kg
4.4lbs~14.4lbs
per monitor.



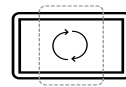
Tilt adjustment :
+90°~ -45°



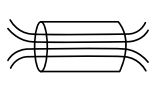
Swivel adjustment :
+90°~ -90°



Curved monitor



Rotation adjustment :
+180°~ -180°



Cable management

